

FORM TYPE R390A/URR EXP. NO.

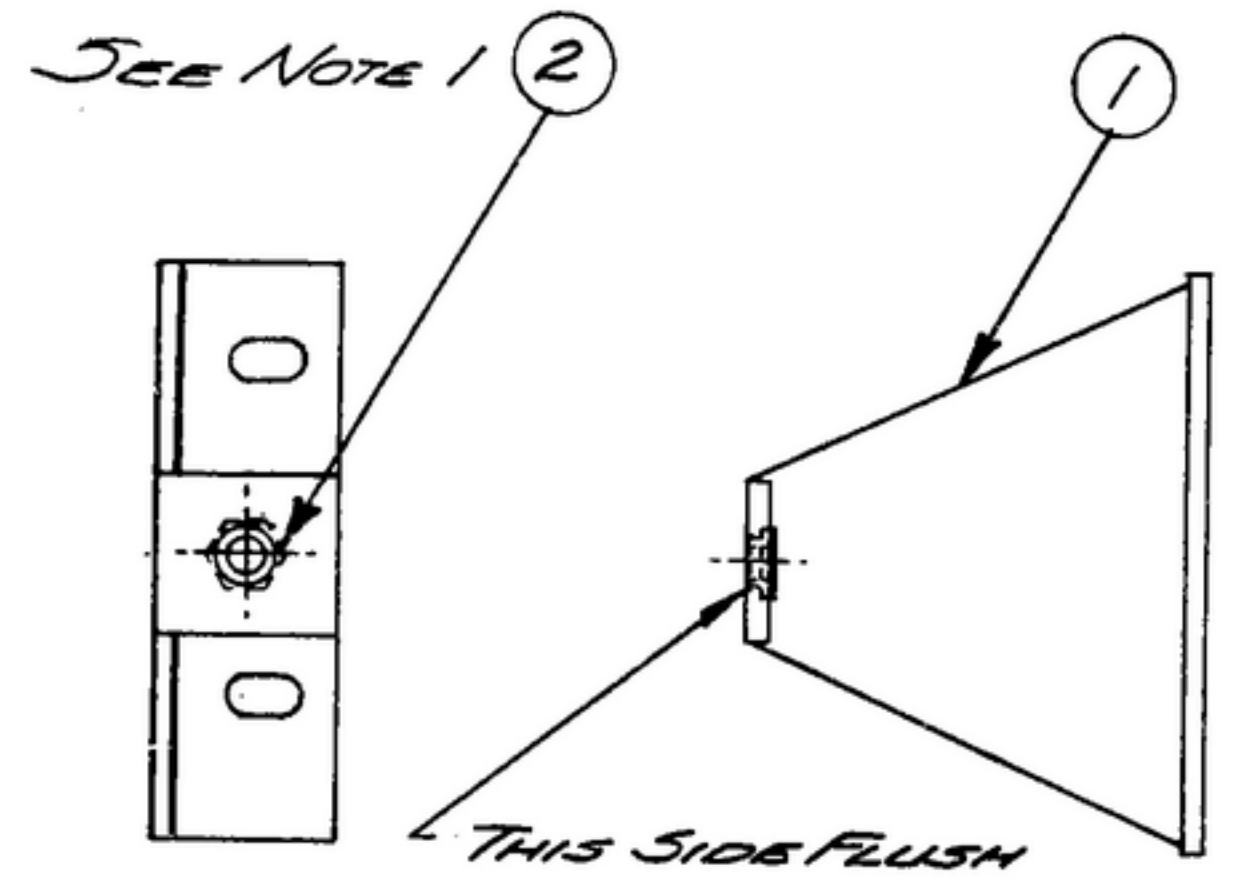
Col. 540 7925002

NOTICE: WHEN GOVERNMENT SPECIFICATIONS, OR OTHER DATA ARE USED FOR ANY PURPOSE OTHER THAN IN CONNECTION WITH A GOVERNMENT RELATED PURCHASE OR OPERATION, THE UNITED STATES GOVERNMENT THEREBY MAKES NO REPRESENTATION AS TO THE ACCURACY, COMPLETENESS, OR THE FACT THAT THE GOVERNMENT MAY HAVE FORMULATED, PROVIDED, OR IN ANY WAY SUPPLIED THE SAID SPECIFICATIONS, OR OTHER DATA. THE USER OF ANY OTHER DATA OR INFORMATION AS TO ANY MATTER CONCERNING THE HOLDING OR ANY OTHER PERSON OR CORPORATION, OR CONVEYING ANY RIGHTS OR PERMISSION TO MANUFACTURE, USE, OR SELL ANY PATENTED INVENTION THAT MAY IN ANY WAY BE RELATED THEREBY.

THIS DOCUMENT HAS BEEN PURCHASED BY THE GOVERNMENT AND MAY BE REPRODUCED AND USED IN CONNECTION WITH ANY GOVERNMENT PURCHASE OR MAINTENANCE OPERATION.

*FOR INFORMATION ONLY. CONTRACTOR MAY AT HIS OPTION DEVIATE FROM THESE PROCESS DETAILS.

REVISIONS			
SYM	DESCRIPTION	DATE	APPROVAL



NOTES:
1. PRESS NUT (2) INTO BRACKET (1).

COLLINS PART NO.	ITEM	QTY	PART NO.	DESCRIPTION	MATL	MATL SPEC
539 0258 003	2	1	SM-G283166-5	NUT - INSERT CAPTIVE		
558 0469 002	1	1	SM-B-249108	BRACKET - VFO		

LIST OF MATERIAL COLLINS PART NO. 558 0469 002

COLLINS NO.	QTY	NEXT ASSY	USED ON
558-0492-004	1	SM-D-343619	↑
		SM-D-249140	SG-DL-248775

DRAWN
NUGEN

CHECKED

APPROVED
Rm

UNLESS OTHERWISE SPECIFIED:
DECIMAL DIMENSIONS INCLUDING HOLE SIZES MAY VARY ±.005
FRACTIONAL DIMENSIONS INCLUDING HOLE SIZES MAY VARY ±1/64
MACHINED ANGLES MAY VARY ±.1°
SHEARED ANGLES MAY VARY ±.25°
BROKEN ANGLES MAY VARY ±1°
ECCENTRICITY BETWEEN ANY DIAMETERS ON THE SAME CENTERLINE SHALL NOT EXCEED .010 TOTAL INDICATOR READING.
ALL DIMENSIONS ARE FINISH DIMENSIONS INCLUDING APPLIED FINISH AND ARE GIVEN IN INCHES.

COLLINS RADIO CO.
14214-PH-51-93
SIGNAL CORPS
REVIEWED *PME*
APPROVED *HLV*
PME
DATE 28 DEC 55 SCALE 1/1

BRACKET ASSY - VFO

DEPARTMENT OF THE ARMY
SIGNAL CORPS ENGINEERING
LABORATORIES
FORT MONMOUTH NEW JERSEY
SM-B-249117